



Thor-Christian Schwanzer
 0837909128
 thor@foundation.co.za

Contact Foundation Property

073 6601990

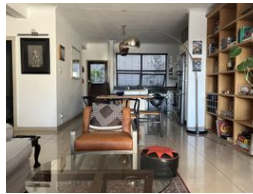
Block C
 Bellevue Campus
 5 Bellevue Road
 Kloof

FEATURED



SOLE MANDATE

Web Ref RL2



R1,799,999

Monthly Bond Repayment R18,579.38
 Calculated over 20 years at 11% with no deposit.

Transfer Costs R70,699.94 **Bond Costs** R36,112.50

These calculations are only a guide. Please ask your conveyancer for exact calculations.

Monthly Levy R2,882

 2
  2
  1

Stunning Apartment in Secure ECO Estate - Hillcrest

Stunning Apartment in Secure ECO Estate - Hillcrest

This spacious two-bedroom, two-bathroom apartment is located in a secure ECO estate in the heart of Hillcrest, offering easy access to the M13, and is close to local shops and schools.

The main bedroom is generously sized and features an en-suite bathroom with double vanities and a bath. A second bathroom includes a shower for added convenience for visitors or guests staying over in the second bedroom.

The open-plan living area includes a modern kitchen with granite countertops and built-in stove, as well as a spacious dining and lounge area, all fully tiled. Step out onto your private patio, perfect for relaxing and enjoying the stunning view. For added entertainment, there's a private braai area for hosting friends and family.

The complex offers fantastic...

Features

Interior		Exterior		Sizes	
Bedrooms	2	Garages	1	Floor Size	129m ²
Bathrooms	2	Security	Yes		
Kitchens	1	Pool	Yes		
Recep. Rooms	2				
Furnished	No				

Extras

Shared Pool Built-in Wardrobes Barbecue Area 24 Hour Access Blinds Built In Braai Centre
 Island Electric Garage Granite Tops Internet Port Laminated Floors

