



Thor-Christian Schwanzer
0837909128
thor@foundation.co.za



Jayne Richards
0828723865
jayne@foundation.co.za

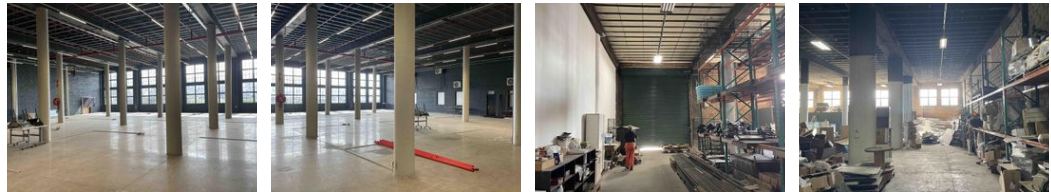
Contact Foundation Property

073 6601990

Block C
Bellevue Campus
5 Bellevue Road
Kloof




Web Ref CL137



R75 per m²

Gross Monthly Rental R180,000 Excl. VAT

 0  0

2400sqm Warehouse to let in Westmead, Pinetown.

2400sqm Warehouse to let in Westmead, Pinetown.

- 2400sqm GLA
- 6m height to eaves
- 400sqm office component
- Fully Sprinklered
- Container access
- 1 x Roller door
- On-grade access
- 400amps power
- 24hr security

We are a team of experienced, professional property practitioners focused within the Commercial and Industrial property sector of South Africa. We aim to create value for parties involved in any transaction.

Features

Zoning Industrial

Interior

Air Conditioning	Yes
Power 3 Phase	Yes
Power Amps	400

Exterior

Security	Yes
----------	-----

Sizes

Floor Size	2,400m ²
Building Height	6m

