



Aphelele Cele
0849087982
aphelele@foundation.co.za

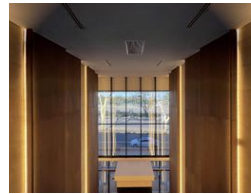
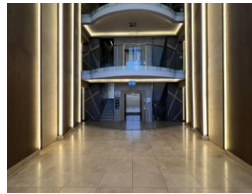
Contact Foundation Property

073 6601990

Block C
Bellevue Campus
5 Bellevue Road
Kloof



Web Ref CL2708



R125 per m²

Gross Monthly Rental R21,222 Excl. VAT

 0  0

A-Grade Office Space To Let in Westville.

A-Grade Office Space To Let in Westville.

This sleek, modern office space is situated on the ground floor of Grayleigh, an exclusive and upscale suburban area in Westville, offering prime exposure to the M13 Highway. Located in a hub of prestigious national and branded businesses, your company will benefit from the added credibility of this high-profile location.

Key Features:

- Prime Location: The office is nestled within a vibrant area surrounded by top-tier retail centers, national brands, and active business traffic, making it an ideal environment for growth.
- Sophisticated Design: Spanning 168.86 sqm, this office features a high-end fit-out, ensuring a professional and polished work atmosphere.

Amenities:

- Open Parking Bays: R650,00 per bay.

Features

Zoning Commercial

Interior

Air Conditioning Yes

Exterior

Security Yes

Sizes

Floor Size 170m²

