



Jayne Richards
0828723865
jayne@foundation.co.za

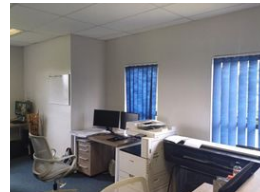
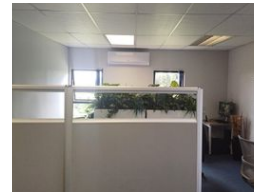
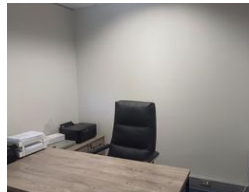
Contact Foundation Property

073 6601990

Block C
Bellevue Campus
5 Bellevue Road
Kloof

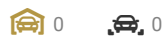


Web Ref CL1199



R110 per m²

Gross Monthly Rental R11,000 Excl. VAT



100m² Spacious 100m² Office to let in Gillitts

This first floor office benefits from an abundance of natural light, creating a pleasant and energizing work environment. The presence of air conditioning throughout the office ensures comfort regardless of the weather conditions, contributing to a conducive work atmosphere.

The combination of a spacious reception area with open-plan office space and well-sized executive offices provides a versatile layout that can accommodate various business needs.

Additionally, the availability of access control, ample parking, and a backup generator within the park adds to the overall

Features

Zoning Commercial

Interior
Air Conditioning Yes

Exterior
Security Yes

Sizes
Floor Size 100m²

