



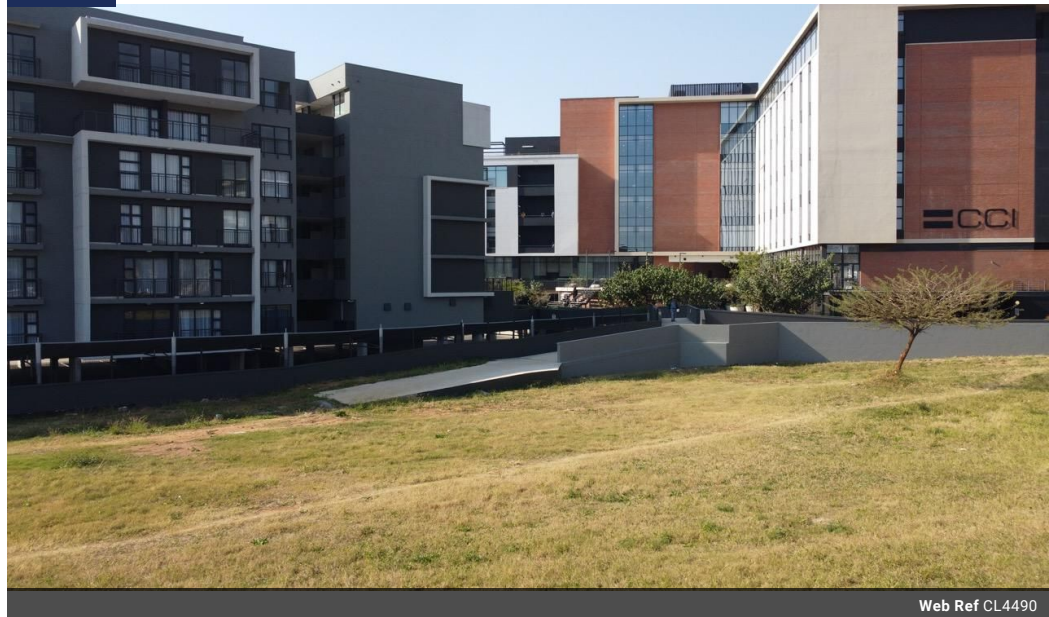
**David Asbury**  
0715155750  
david@foundation.co.za

Contact Foundation Property

073 6601990

Block C  
Bellevue Campus  
5 Bellevue Road  
Kloof

FEATURED



Web Ref CL4490



R33,000,000

Prime Development Site for Sale at 3 Park Way, Umhlanga Ridge, KwaZulu-Natal

Prime Development Site for Sale at 3 Park Way, Umhlanga Ridge, KwaZulu-Natal

Property Overview:

- Location: 3 Park Way, Umhlanga Ridge, KwaZulu-Natal
- Zoning: Mixed Use (Residential, Retail & Commercial)
- Price: R33 million

Key Features:

- Land Size: 4,831 sqm
- Bulk Size: 8,213 sqm
- Super Prime Location: Situated in the heart of Umhlanga Ridge, one of the most sought-after areas in KwaZulu-Natal.
- Versatile Zoning: The mixed-use zoning allows for a variety of development opportunities including residential, retail, and commercial projects.
- Investment Opportunity: Ideal for investors looking to capitalize on the high demand and premium location of Umhlanga Ridge.

Highlights:

- Strategic Location: Positioned on the corner of Park Way and Twilight Drive, providing excellent visibility and access.

Features

